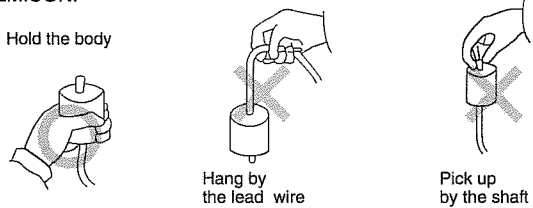


INSTRUCTION FOR USERS OF NEMICON ROTARY ENCODER

CAUTIONS Users of NEMICON rotary encoder should observe following instructions before they touch the encoder.

PRECAUTIONS FOR HANDLING

- 1) Hold the body of the encoder. Never hang it by the lead wire(s) nor pick up it by the shaft.
- 2) Isolate the encoder from shock and vibration.
- 3) Keep the encoder away from dust, oil, water, high or low temperature and corrosive materials. These situations may cause the damage of the encoder and a personal injury.
- 4) Any modification of the encoder is prohibited. A modified encoder is not a subject to the warranty.
- 5) Do not contact a shaft, a disc, a coupling or other rotating part of the encoder in operation to avoid a personal injury.
- 6) If any flaw is found before the encoder is used, please contact the NEMICON.

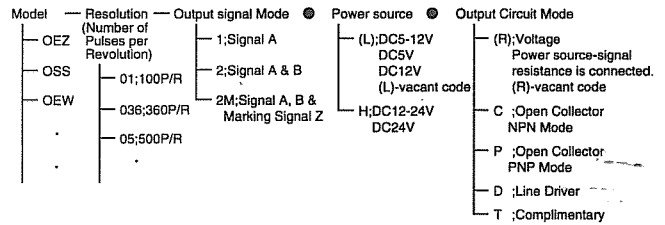


NIDEC NEMICON CORPORATION

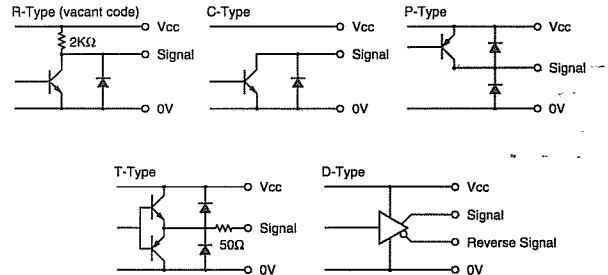
Address : NIDEC-TOKYO BLDG 1-20-13 OSAKI
SHINAGAWA-KU, TOKYO 141-0032, JAPAN
Tel : 03-5437-2933
Telefax : 03-5437-8430

Please identify the encoder with the specification

1. Definition of Models and Types.



2. Circuit of Output Signals.



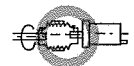
3. Electrical Connections

(Only Models of OEZ, OSS, OEW, FES, OEL, OPP are described here. Please refer to NEMICON Catalogue of Other Types.)

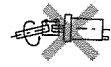
R(vacant code) • C • P • T-Type		D-Type	
Color	Descriptions	Color	Descriptions
Red	Power Source	Red	Power Source
Black	0V common	Black	0V common
Blue or Green	Signal A	Green	Signal A
White	Signal B	White	Signal B
Yellow	Signal Z	Yellow	Signal Z
Shielding	No Connection	Shielding	No Connection

CAUTIONS Precautions for installation (Please read the general catalogue for details)

- 1) The encoder should be kept away from shock and vibration, for preventing the damage of a glass disc inside.
- 2) The encoder should be solidly mounted on a rigid support with screws and the shaft of the encoder should be aligned coaxially with a driving shaft.
- 3) The encoder shaft should be connected with the driving shaft with a flexible coupling. Both shafts should be aligned in parallel and the maximum center offset of them shall be within the specification of the coupling.
- 4) The supply voltage should be kept within the required range. An electric power source should use an insulating transformer as IEC 742 to connect with an encoder circuit. Otherwise, it may cause the damage of the encoder.
- 5) A shielded cable should be used for encoder output connection. The cable should be isolated from AC power lines to avoid electromagnetic interference. The maximum length of the cable is 10m and 50m for R-Type and C-Type especially. D-Type is recommended in a location where the electromagnetic interference is concerned.
- 6) The wirings of the rotary encoder should be connected according to color codes of wires and electrical connections.
- 7) The encoder should be located free of dust, oil, water, high or low temperature, high humidity and corrosive or flammable materials.
- 8) The lead wires of the encoder should not be pulled out or bent into a sharp angle.



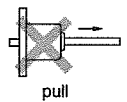
Flexible coupling



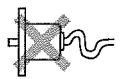
Unparallel or installed directly



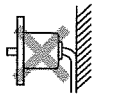
When rotating rapidly, the offset of the shaft occurs easily



pull



Expand or contract



Bend into a sharp angle

- Users of NEMICON rotary encoder are requested to read the instructions described in this catalogue for handling and installation.
- Designers of product in which NEMICON rotary encoder is comprised should refer to the general catalogue of NEMICON rotary encoder.
- Without complying with these instructions a designer may cause a defective design of the product and poor performance of NEMICON encoder.
- Please contact the local NEMICON agents for more information.

- The specification of the NEMICON rotary encoder may be changed without notice.
- Copying of this instruction is prohibited in any form.
- Any question or a report of erratum on this instruction is welcome by the NEMICON.

CE Mark

Electromagnetic Compatibility Directive: 89/336/EEC, EMVG (EN50081-2: 1993, EN50082-2: 1995)

