

MANUAL TYPE

35PG Model

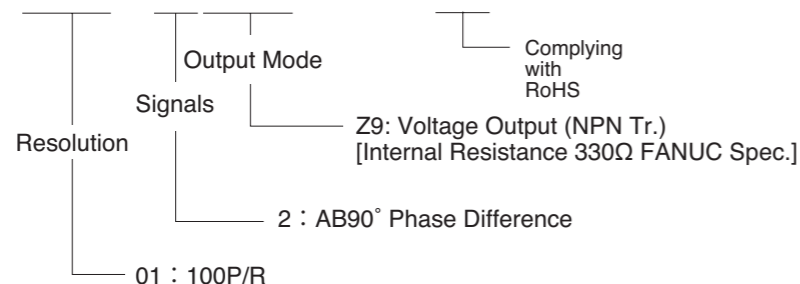


Small Size Model

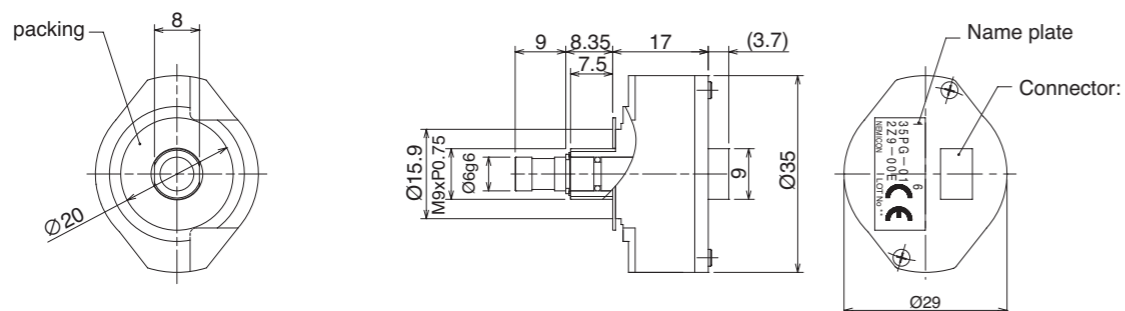
- Ideal for Measuring Equipment.
- Build-in Click Mechanism.



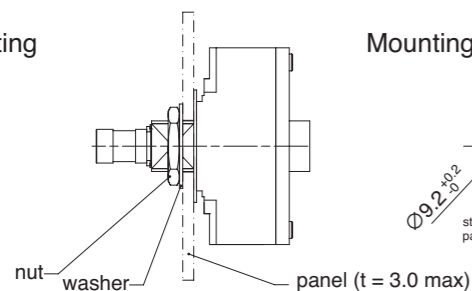
Model  
**35PG-01-2Z9-00E**



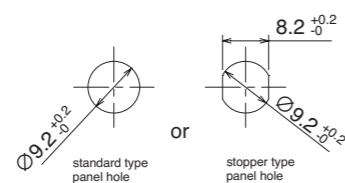
External Dimension



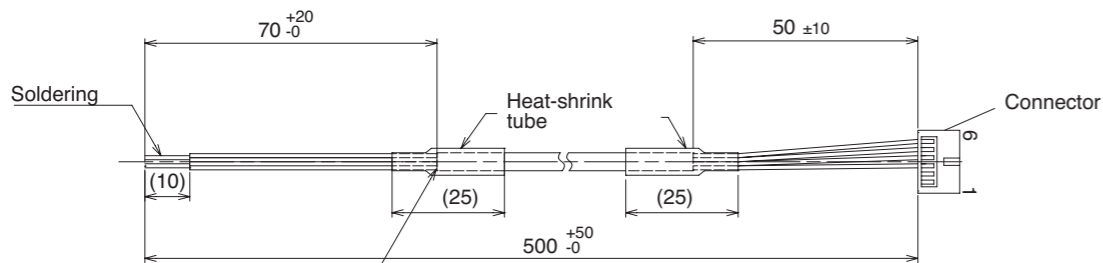
Mounting



Mounting hole



Option Cable(sold separately)

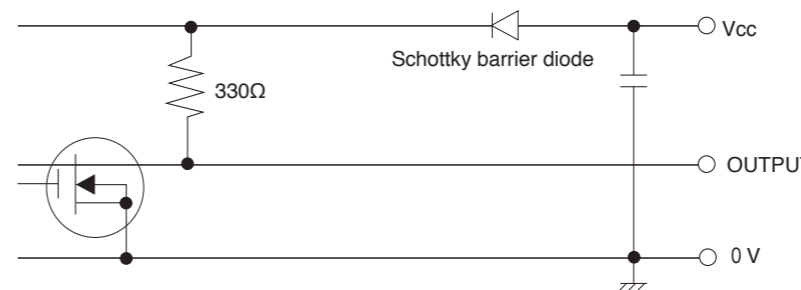


The shield is cut on the edge of the sheath.

Electrical Spec

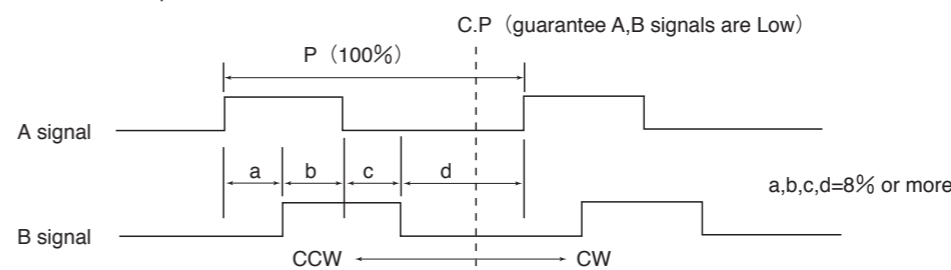
Power Supply(Vcc)	DC+5V ± 10%	Maximum Sink Current	20mA
Current Consumption	70mA Max	Maximum Frequency Response	1kHz
Resolution	100P/R	Rise & Fall Time	1µs Max
Output Signal	AB90° Phase Difference Voltage Output	Insulation Resistance	50MΩ Min DC 500V (0V ⇔ case)
Output Voltage	[H] : VCC-1V Min [L] : 0.5V Max		

Output Circuit



Wave Form

CW→Rotating Toward Clockwise Viewed from Shaft Side.  
100 click · 100 pulse/resolution (C.P=Click Point)



Electrical Connections

Connector Hirose Electric Co., Ltd.  
DF50A-6P-1V (51)

Pin No.	Signal
1	N.C
2	N.C
3	Sig, B
4	Sig, A
5	0V
6	5V

Mechanical Spec

Starting Torque	1.2x10 <sup>-2</sup> N·m Max
Shaft Loading	Nominal : 9.8N、Instantaneous : 19.6 N(Thrust) Nominal : 19.6N、Instantaneous : 19.6 N(Radial)
Rotation Life	> 1 million rotations (200min <sup>-1</sup> )
Maximum Permissible Speed	600min <sup>-1</sup> Max (Instantaneous)、200min <sup>-1</sup> (Nominal)
Net Weight	100g Max

Environmental Spec

Operating Temperature	-10°C~+60°C
Storage Temperature	-30°C~+80°C
Humidity	RH 90% Max No Condensation
Vibration	10~55 Hz / 1.5mm X,Y,Z Each 2h
Shock	490m/s <sup>2</sup> , 11ms X, Y, Z Each 3 times
Ingress Protection	IP65 (Panel Mounting)